



CUSTOMER:

Customer Name: ALINVEST CZ

PROJECT:

Project Code: E2558

Project Name: ALINVEST CZ

DOCUMENT INFORMATION:


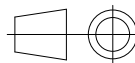
Document Title: Equipment Spider Diagram

Contractor File Name: 2558-33xx-SFS-E-DWG-SPD

Contractor Revision Number: A

Customer File Name: 2558-33xx-SFS-E-DWG-SPD

Customer Revision Number: -

						CONTRACTOR		CONTRACTOR dwg number	Rev. A	Project Code E2558	Project Name ALINVEST CZ													
								2558-33xx-SFS-E-DWG-SPD		Document Title Equipment Spider Diagram			Scale 1:1											
A	01/12/2025	INITIAL VERSION			RORI			ANSA		RORI	CLIENT dwg number		Rev. -	DESIGNED: RORI	DRAWN: ANSA	APPROVED: RORI	Format A3							
Rev.	Date	Revisions description			Designed	Draw	Approved	2558-33xx-SFS-E-DWG-SPD	DATE: 01/12/2025	DATE: 01/12/2025	DATE: 01/12/2025	Sheet 1 OF x												
	1		2		3			4		5		6			7		8		9		10		11	



POWER & CONTROL PANEL

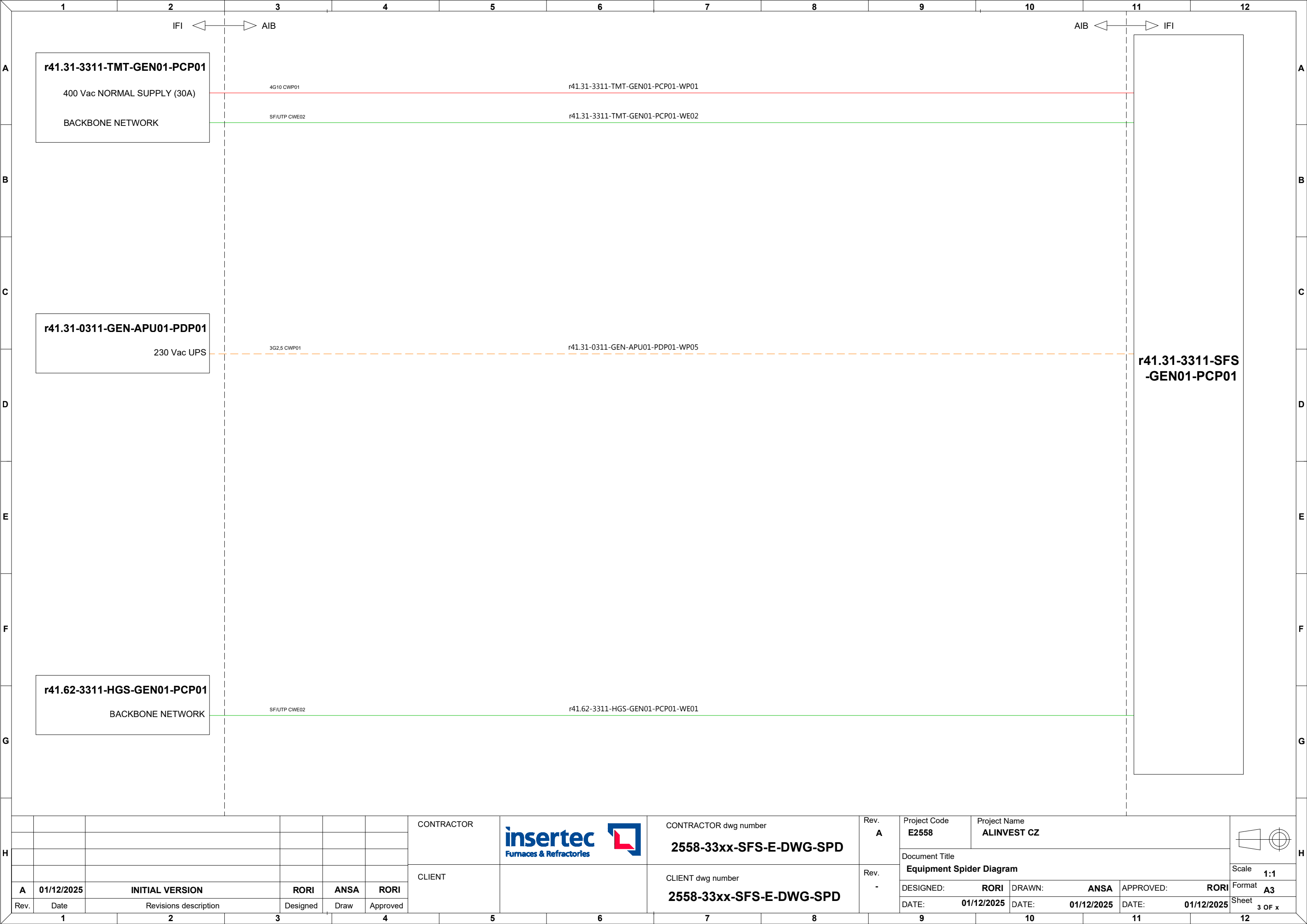
BILLET LINE #01 ROTARY INJECTOR

r41.31-3311-SFS-GEN01-PCP01

CATEGORY
Power cables
CWP01: Regular power cables
CWP02: Shielded power cable
CWP03: Flexible power cables
CWP04: Regular high temperature power cables
CWP05: Shielded high temperature power cables
CWP06: General use power cable
Instrumentation and control cables
CWC01: Regular instrumentation control cables
CWC02: Shielded instrumentation control cables
CWC03: Thermocouple cable
CWC04: Flexible instrumentation control cables
CWC05: High voltage cables for ignition transformers
CWC06: Regular high temperature instrumentation control cables
CWC07: Shielded high temperature instrumentation control cables
Communication cables
CWE01: Fieldbus communication cable (Inside cabinets)
CWE02: Fieldbus communication cable (Outside cabinets)
CWE03: Optic fibre communication cable

LEGEND
<div><div></div>400Vac Power supply</div> <div><div></div>400Vac UPS power supply</div> <div><div></div>230Vac Power supply</div> <div><div></div>230Vac UPS power supply</div> <div><div></div>Regular control signals</div> <div><div></div>Analog & shielded signals</div> <div><div></div>T/C connection</div> <div><div></div>Communication connection</div>

						CONTRACTOR	<div><div>insertec</div><div>Furnaces & Refractories</div></div> <div></div>	CONTRACTOR dwg number 2558-33xx-SFS-E-DWG-SPD	Rev. A	Project Code E2558	Project Name ALINVEST CZ			<div></div>
										Document Title Equipment Spider Diagram			Scale 1:1	
A	01/12/2025	INITIAL VERSION		RORI	ANSA					RORI	DESIGNED: RORI	DRAWN: ANSA	APPROVED: RORI	
Rev.	Date	Revisions description		Designed	Draw	Approved	CLIENT		Rev. -	DATE: 01/12/2025	DATE: 01/12/2025	DATE: 01/12/2025	Sheet 2 OF x	




POWER & CONTROL PANEL

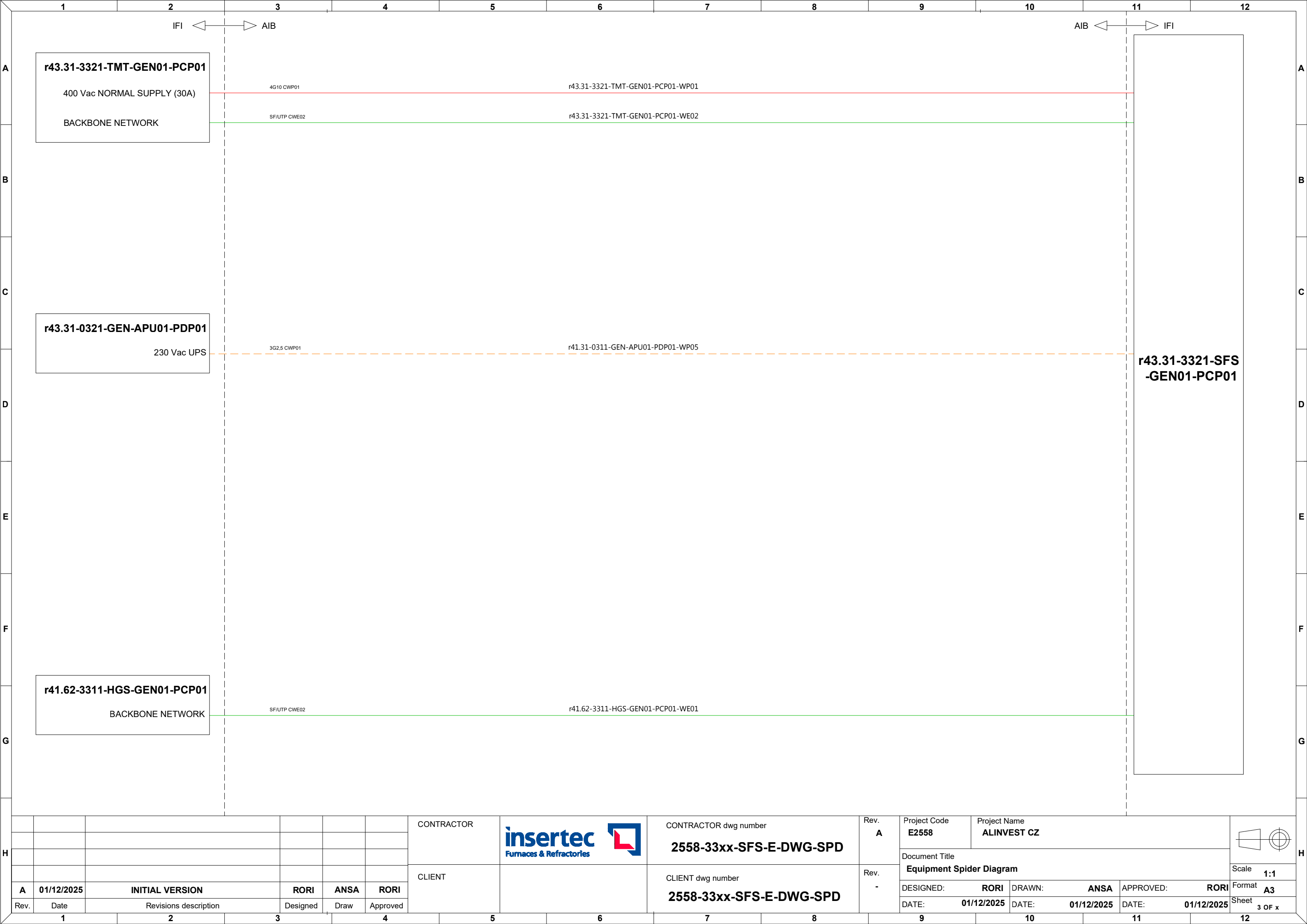
CASTING LINE #01 ROTARY INJECTOR


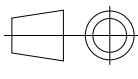
r43.31-3321-SFS-GEN01-PCP01

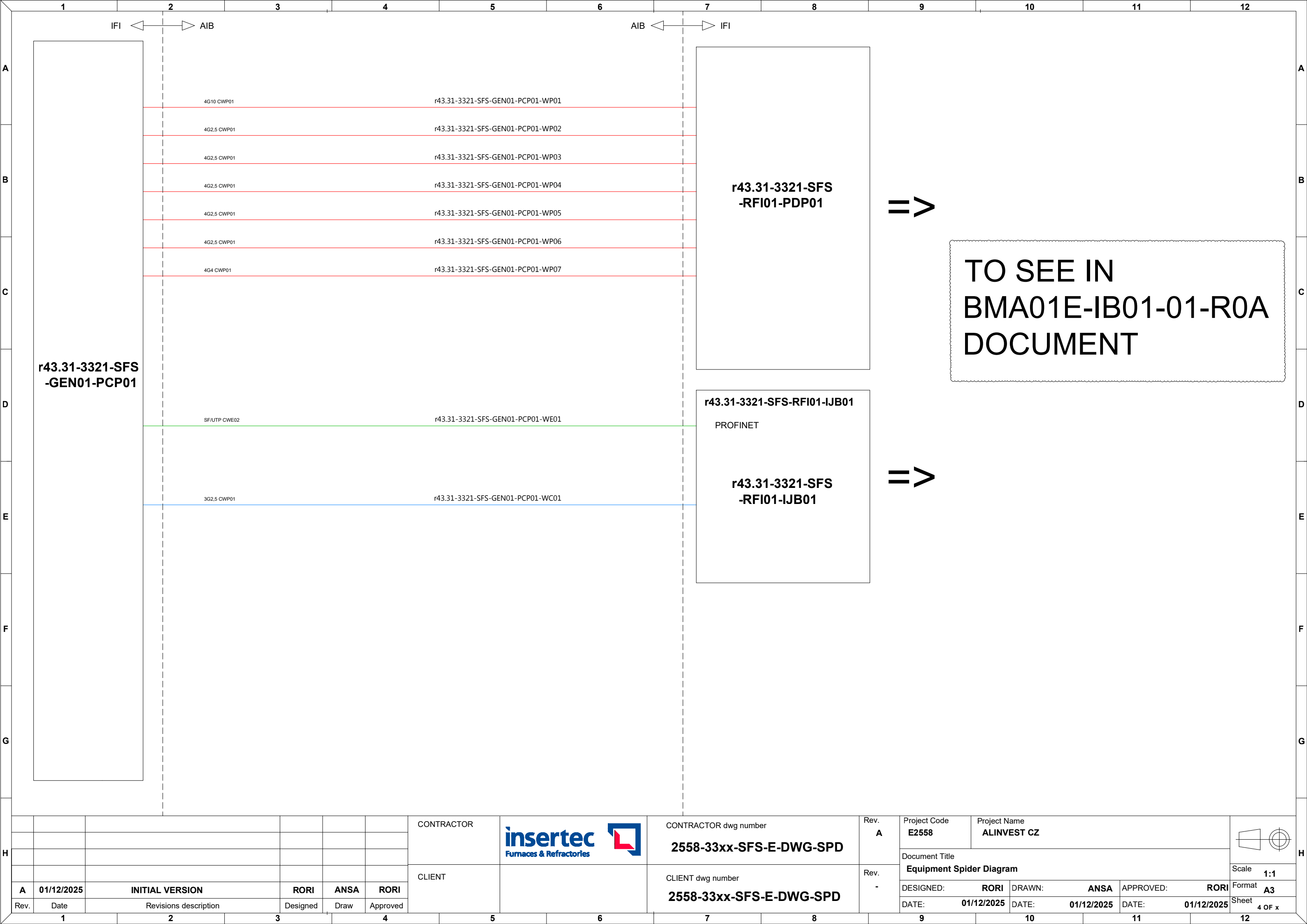
CATEGORY
Power cables
CWP01: Regular power cables
CWP02: Shielded power cable
CWP03: Flexible power cables
CWP04: Regular high temperature power cables
CWP05: Shielded high temperature power cables
CWP06: General use power cable
Instrumentation and control cables
CWC01: Regular instrumentation control cables
CWC02: Shielded instrumentation control cables
CWC03: Thermocouple cable
CWC04: Flexible instrumentation control cables
CWC05: High voltage cables for ignition transformers
CWC06: Regular high temperature instrumentation control cables
CWC07: Shielded high temperature instrumentation control cables
Communication cables
CWE01: Fieldbus communication cable (Inside cabinets)
CWE02: Fieldbus communication cable (Outside cabinets)
CWE03: Optic fibre communication cable


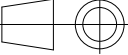
LEGEND
<div><div></div>400Vac Power supply</div> <div><div></div>400Vac UPS power supply</div> <div><div></div>230Vac Power supply</div> <div><div></div>230Vac UPS power supply</div> <div><div></div>Regular control signals</div> <div><div></div>Analog & shielded signals</div> <div><div></div>T/C connection</div> <div><div></div>Communication connection</div>

						CONTRACTOR	<div><div>insertec</div><div>Furnaces & Refractories</div></div> <div></div>	CONTRACTOR dwg number	Rev. A	Project Code E2558	Project Name ALINVEST CZ			<div><div></div><div></div></div>
								2558-33xx-SFS-E-DWG-SPD						
						CLIENT		CLIENT dwg number	Rev. -	Equipment Spider Diagram			Scale 1:1	
A	01/12/2025	INITIAL VERSION		RORI	ANSA			RORI			DESIGNED: RORI	DRAWN: ANSA	APPROVED: RORI	Format A3
Rev.	Date	Revisions description		Designed	Draw			Approved			DATE: 01/12/2025	DATE: 01/12/2025	DATE: 01/12/2025	Sheet 5 OF x



H							CONTRACTOR		CONTRACTOR dwg number 2558-33xx-SFS-E-DWG-SPD	Rev. A	Project Code E2558	Project Name ALINVEST CZ				H								
												Document Title Equipment Spider Diagram					Scale 1:1							
												DESIGNED: RORI	DRAWN: ANSA	APPROVED: RORI			Format A3							
	A	01/12/2025	INITIAL VERSION			RORI	ANSA	RORI	CLIENT dwg number 2558-33xx-SFS-E-DWG-SPD	Rev. -	DATE: 01/12/2025	DATE: 01/12/2025	DATE: 01/12/2025	Sheet 3 OF x										
	Rev.	Date	Revisions description			Designed	Draw	Approved																
	1		2		3		4		5		6		7		8		9		10		11		12	



H							CONTRACTOR		CONTRACTOR dwg number 2558-33xx-SFS-E-DWG-SPD	Rev. A	Project Code E2558	Project Name ALINVEST CZ		H									
						CLIENT		CLIENT dwg number 2558-33xx-SFS-E-DWG-SPD	Rev. -	Document Title Equipment Spider Diagram			Scale 1:1										
	A	01/12/2025	INITIAL VERSION		RORI					ANSA	RORI	DESIGNED: RORI	DRAWN: ANSA		APPROVED: RORI	Format A3							
	Rev.	Date	Revisions description		Designed					Draw	Approved	DATE: 01/12/2025	DATE: 01/12/2025		DATE: 01/12/2025	Sheet 4 OF x							
1		2		3		4		5		6		7		8		9		10		11		12	


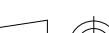
POWER & CONTROL PANEL

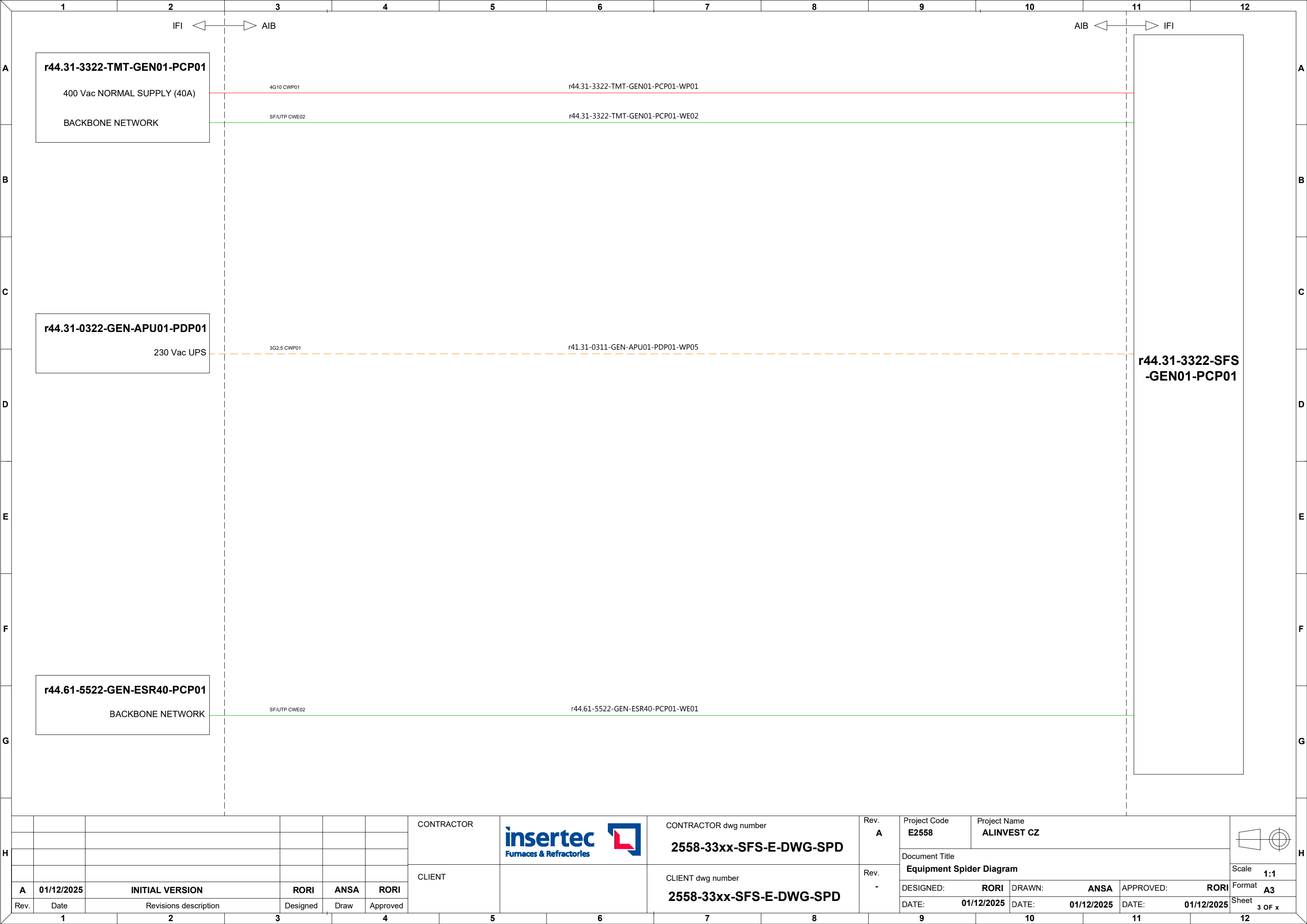
CASTING LINE #02 ROTARY INJECTOR

r44.31-3322-SFS-GEN01-PCP01

CATEGORY
Power cables
CWP01: Regular power cables
CWP02: Shielded power cable
CWP03: Flexible power cables
CWP04: Regular high temperature power cables
CWP05: Shielded high temperature power cables
CWP06: General use power cable
Instrumentation and control cables
CWC01: Regular instrumentation control cables
CWC02: Shielded instrumentation control cables
CWC03: Thermocouple cable
CWC04: Flexible instrumentation control cables
CWC05: High voltage cables for ignition transformers
CWC06: Regular high temperature instrumentation control cables
CWC07: Shielded high temperature instrumentation control cables
Communication cables
CWE01: Fieldbus communication cable (Inside cabinets)
CWE02: Fieldbus communication cable (Outside cabinets)
CWE03: Optic fibre communication cable

LEGEND
<div><div></div>400Vac Power supply</div> <div><div></div>400Vac UPS power supply</div> <div><div></div>230Vac Power supply</div> <div><div></div>230Vac UPS power supply</div> <div><div></div>Regular control signals</div> <div><div></div>Analog & shielded signals</div> <div><div></div>T/C connection</div> <div><div></div>Communication connection</div>

						CONTRACTOR	<div><div>insertec</div><div>Furnaces & Refractories</div></div> <div></div>	CONTRACTOR dwg number	Rev. A	Project Code E2558	Project Name ALINVEST CZ			<div></div>
								Document Title						
								Equipment Spider Diagram			Scale 1:1			
A	01/12/2025	INITIAL VERSION			RORI	ANSA	RORI	CLIENT dwg number	Rev. -				Format A3	
Rev.	Date	Revisions description			Designed	Draw	Approved	2558-33xx-SFS-E-DWG-SPD		DESIGNED: RORI DRAWN: ANSA APPROVED: RORI			Sheet 9 OF x	
								DATE: 01/12/2025 DATE: 01/12/2025 DATE: 01/12/2025						




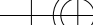

POWER & CONTROL PANEL

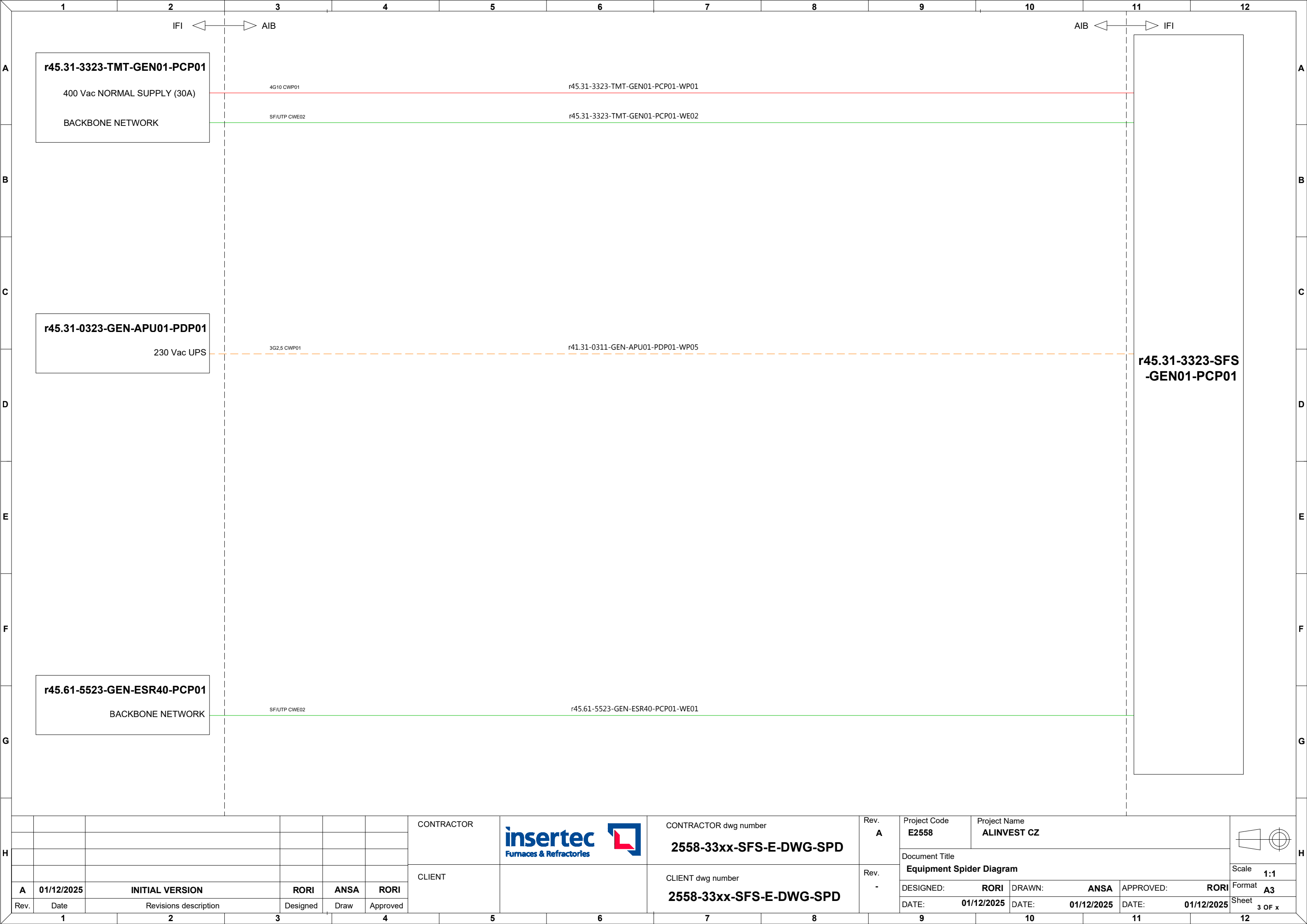
CASTING LINE #03 ROTARY INJECTOR

r45.31-3323-SFS-GEN01-PCP01

CATEGORY
Power cables
CWP01: Regular power cables
CWP02: Shielded power cable
CWP03: Flexible power cables
CWP04: Regular high temperature power cables
CWP05: Shielded high temperature power cables
CWP06: General use power cable
Instrumentation and control cables
CWC01: Regular instrumentation control cables
CWC02: Shielded instrumentation control cables
CWC03: Thermocouple cable
CWC04: Flexible instrumentation control cables
CWC05: High voltage cables for ignition transformers
CWC06: Regular high temperature instrumentation control cables
CWC07: Shielded high temperature instrumentation control cables
Communication cables
CWE01: Fieldbus communication cable (Inside cabinets)
CWE02: Fieldbus communication cable (Outside cabinets)
CWE03: Optic fibre communication cable

LEGEND
<div><div></div>400Vac Power supply</div> <div><div></div>400Vac UPS power supply</div> <div><div></div>230Vac Power supply</div> <div><div></div>230Vac UPS power supply</div> <div><div></div>Regular control signals</div> <div><div></div>Analog & shielded signals</div> <div><div></div>T/C connection</div> <div><div></div>Communication connection</div>

						CONTRACTOR	<div><div>insertec</div><div>Furnaces & Refractories</div></div> <div></div>	CONTRACTOR dwg number	Rev. A	Project Code	Project Name			<div></div>															
											E2558	ALINVEST CZ																	
										Document Title																			
						CLIENT		CLIENT dwg number	Rev. -	Equipment Spider Diagram						Scale	1:1												
A	01/12/2025	INITIAL VERSION			RORI					ANSA	RORI	DESIGNED:	RORI	DRAWN:	ANSA	APPROVED:	RORI	Format	A3										
Rev.	Date	Revisions description			Designed					Draw	Approved	DATE:	01/12/2025	DATE:	01/12/2025	DATE:	01/12/2025	Sheet	12 OF x										
	1			2			3						4		5		6		7		8		9		10		11		12





POWER & CONTROL PANEL

CASTING LINE #04 ROTARY INJECTOR

r46.31-3324-SFS-GEN01-PCP01

CATEGORY
Power cables
CWP01: Regular power cables
CWP02: Shielded power cable
CWP03: Flexible power cables
CWP04: Regular high temperature power cables
CWP05: Shielded high temperature power cables
CWP06: General use power cable
Instrumentation and control cables
CWC01: Regular instrumentation control cables
CWC02: Shielded instrumentation control cables
CWC03: Thermocouple cable
CWC04: Flexible instrumentation control cables
CWC05: High voltage cables for ignition transformers
CWC06: Regular high temperature instrumentation control cables
CWC07: Shielded high temperature instrumentation control cables
Communication cables
CWE01: Fieldbus communication cable (Inside cabinets)
CWE02: Fieldbus communication cable (Outside cabinets)
CWE03: Optic fibre communication cable

LEGEND
<div><div></div>400Vac Power supply</div> <div><div></div>400Vac UPS power supply</div> <div><div></div>230Vac Power supply</div> <div><div></div>230Vac UPS power supply</div> <div><div></div>Regular control signals</div> <div><div></div>Analog & shielded signals</div> <div><div></div>T/C connection</div> <div><div></div>Communication connection</div>

						CONTRACTOR		CONTRACTOR dwg number 2558-33xx-SFS-E-DWG-SPD	Rev. A	Project Code E2558	Project Name ALINVEST CZ			
										Document Title Equipment Spider Diagram				
A	01/12/2025	INITIAL VERSION		RORI	ANSA			RORI	CLIENT	CLIENT dwg number 2558-33xx-SFS-E-DWG-SPD	Rev. -	DESIGNED: RORI		DRAWN: ANSA
Rev.	Date	Revisions description		Designed	Draw	Approved	Format A3							
1	2	3		4	5	6	7	8				9	10	11

